



ANEST
IWATA



A GREAT STORY BEGINS
WITH A STRONG FIRST CHAPTER

WS-primer

Anest Iwata's Very

First Dedicated

Spray Gun For Primer.

**GREAT
FINISHES
START WITH
A SOLID**

FOUNDATION.





ANEST
IWATA

ANEST IWATA WP 15 BAR / 225 PSI 9X3.5 (EN) ISO 2398-2A

ANEST
IWATA

WHY

WS-PRIMER?

Our first ever dedicated Primer spray gun.

Available in 2 versions optimized for the most important Primer applications.



Filler

The Filler workflow values quality and flexibility over efficiency. It delivers highest quality results.



Wet on Wet

The Wet on Wet workflow is the go-to solution for efficiency and time-savings. No sanding required.

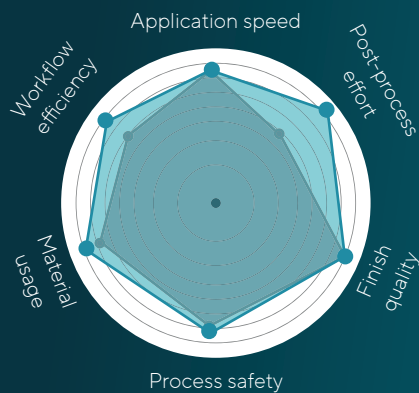
Two highly specific workflows aiming for the same ultimate goal:

» Reproducing OEM-like finishes.

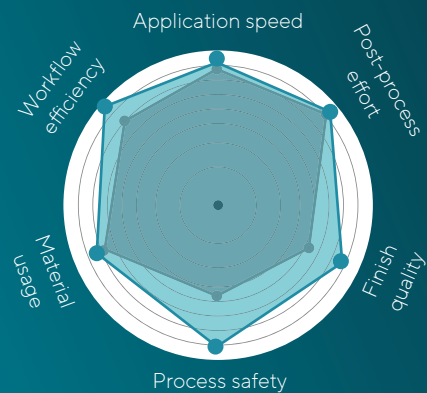
The two workflows excel in different aspects.



FILLER



WET ON WET



THE WS-PRIMER HELPS BOTH WORKFLOWS TO OVERCOME THEIR SHORTCOMINGS.



FILLER APPLICATION

Give your Filler application a headstart - with WS-Primer.

A proper application reduces the time needed for sanding and consequently lowers the material consumption. In short, you save time and money while the WS-Primer ensures top-notch quality of your finish.

- » **Flat and even material laydown.**
- » **Low time effort for sanding.**
- » **Less abrasive consumption.**



ACHIEVE PERFECTION FASTER AND EASIER - EVERY TIME.



WET ON WET APPLICATION

The best indicator for a job well done is a satisfied customer who returns.

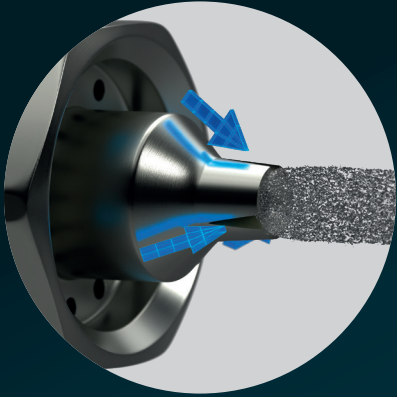
With the WS-Primer specialized for Wet-on-Wet application specifically, you can achieve the flattest and most premium finishes. Maintaining the quick workflow you are used to, this enables you to achieve the highest-quality results that impress.

SUPERIOR FINISHES, QUICK WORKFLOWS, RELIABLE RESULTS - CONSISTENTLY.

Even surface structure right from the start. <<

Less material build up and OEM-like finishes. <<

POWER START



Split Nozzle™ Technology

Here is what makes our
WS-Primer stand out.

Our Split Nozzle™
Technology amps up
atomization by guiding
airflow precisely through
three nozzle slots.
It increases accuracy even
at low pressures, delivering
Anest Iwata's unique fan
pattern: flat and oval—
perfect for flawless jobs
and saving material.

**No gimmicks,
just proven results.**

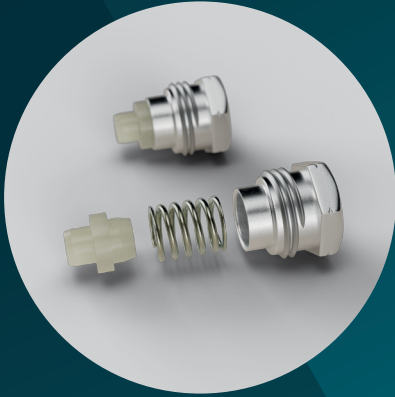


**A unique
atomization technology**

**FOR FLAWLESS
RESULTS,
EVERY TIME.**



AMAZING TECHNOLOGY



Self-adjusting Needle Packing

The quality of life improvement you never knew you were missing.

Our engineers reimagined the construction of the Needle Packing. The result is a build which takes away all the guesswork of how to tighten it properly. Simply tighten it and everything else is being taken care of.



WHEREVER YOU LOOK



Bullet-proof Air Valve Seat Set

Imagine already proven designs now turned up to 11.

The inverted design of Anest Iwata's recent Air Valve Seat Sets was already sealed by a solvent resistant O-Ring, which makes it very durable and less prone to over tightening.

Now we have taken this already proven design and have made it from a piece of Aluminum.

The result? A virtually indestructible Air Valve Seat Set.

THE FEATURES EXPLAINED



Form-fitting Trigger Stud

The enhancement to your everyday workflow you were waiting for.

WS-Primer comes with a form-fitting trigger stud which lets you fix the trigger one handed with an industry standard hex-key. Forget about the hassle of fixing your trigger with a clumsy retaining ring.



"Multi-fit" Air Cap Design

A single air cap can be used for a wide variety of different nozzles.

This boosts the WS-Primer's overall efficiency in terms of time savings and optimizing the painting experience but also helps keeping spare part and maintenance costs low.




Low friction PTFE Trigger Pad

Less friction - smoother trigger action.

The PTFE's smooth gliding yet robust surface properties make it ideal to enhance the trigger action.





Ergonomic Design


It fits like a glove.
Well... almost!

Ever felt like your spray gun
is not optimally balanced?



Our engineers meticulously designed the whole spray gun
around the perfect balance point. Pick it up and you'll feel
the difference.

And what about the blue knob?
That's the indicator for a Wet on Wet spray gun.
Easy and convenient to spot.



Hard-Anodized Gun Body

Easy to clean, durable
and beautiful.



WS-Primer comes in a unique Hard-Anodization. This surface
is robust and easy to clean which helps you save valuable time.

**“When we first heard about the
WS-Primer we were unsure if it was for us.**

**AFTER TRYING IT THE
FIRST TIME, WE KNEW IT WAS.”**

Anton Dorfmeister, Kfz Dorfmeister GmbH

www.anest-iwata-coating.com

ACTING RESPONSIBLY



We at Anest Iwata care about the planet we are living on.

Anest Iwata has been all about sustainability long before it was cool. It's part of our DNA and shows in everything we do. We make our spray guns more efficient every day and pack them in the most recyclable way possible. Simple as that.



4 STEPS TO STAY GREEN & CLEAN.

LONG-LASTING SPRAY GUNS



Our spray guns are designed to endure over time.

Reduced need for frequent replacements.

Cut down on material consumption and waste.

COMPLETE PARTS ACCESS

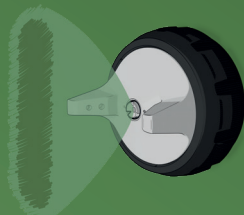


We offer a wide range of spray gun spare parts.

Easy repairs reduce full replacements.

Repairability optimizes resource use.

OPTIMIZED PAINT PROCESS



Reduction in processing time.

Decrease in the amount of material used.

Optimized work experience.

SUSTAINABLE PACKAGING



Our cardboard box is simple and fully recyclable.

The internal tray is made from fully reclaimed sugarcane pulp.

Printed manuals are minimized.

SAVE

TIME

MONEY

ENVIRONMENT

TECHNICAL SPECIFICATIONS

Weight g (lbs)
without cup:

380 (0.84)

Air
connection:

G1/4" M

Noise level
(LAeqT)*:

85 db(A)

Fluid
connection:

G1/4" F



**"A spray gun
that applies filler**

**AS EASILY
AS WET ON WET"**

* Measuring point: 1 m backwards from gun, 1.6 m height.

Michael Dick - Kfz Dorfmeister GmbH

TECHNICAL DATA

Type of Application	Code Number & Model Name	Nozzle Size ø mm (in)	Air Cap	Pressure Set bar (psi)	Air Consumption NI/min (cfm)	Pattern Width mm (in)	Fluid Nozzle Marking	Fluid Needle marking	Fluid Nozzle & Needle Set
Wet on Wet	130811AO WS-Primer-12	1.2 (0.047)	WS-PRIMER-01	2.0 (29)	370 (13.06)	150 (5.90)	AI WSP 12	10-12 WSP	930772AO
	130812AO WS-Primer-13	1.3 (0.051)				180 (7.08)	AI WSP 13	13-18 WSP	930773AO
	130813AO WS-Primer-14	1.4 (0.055)				190 (7.48)	AI WSP 14		930774AO
Filler	130815AO WS-Primer-16	1.6 (0.062)				210 (8.26)	AI WSP 16	930776AO	
	130816AO WS-Primer-18	1.8 (0.070)				235 (9.25)	AI WSP 18		930777AO



WSP



**Learn more about Anest Iwata's
very first dedicated spray gun
for Primer application: WS-Primer.**

Scan the QR-Code or visit
<https://l.ead.me/bfDk4k> from your
device for comprehensive support.

www.anest-iwata-coating.com